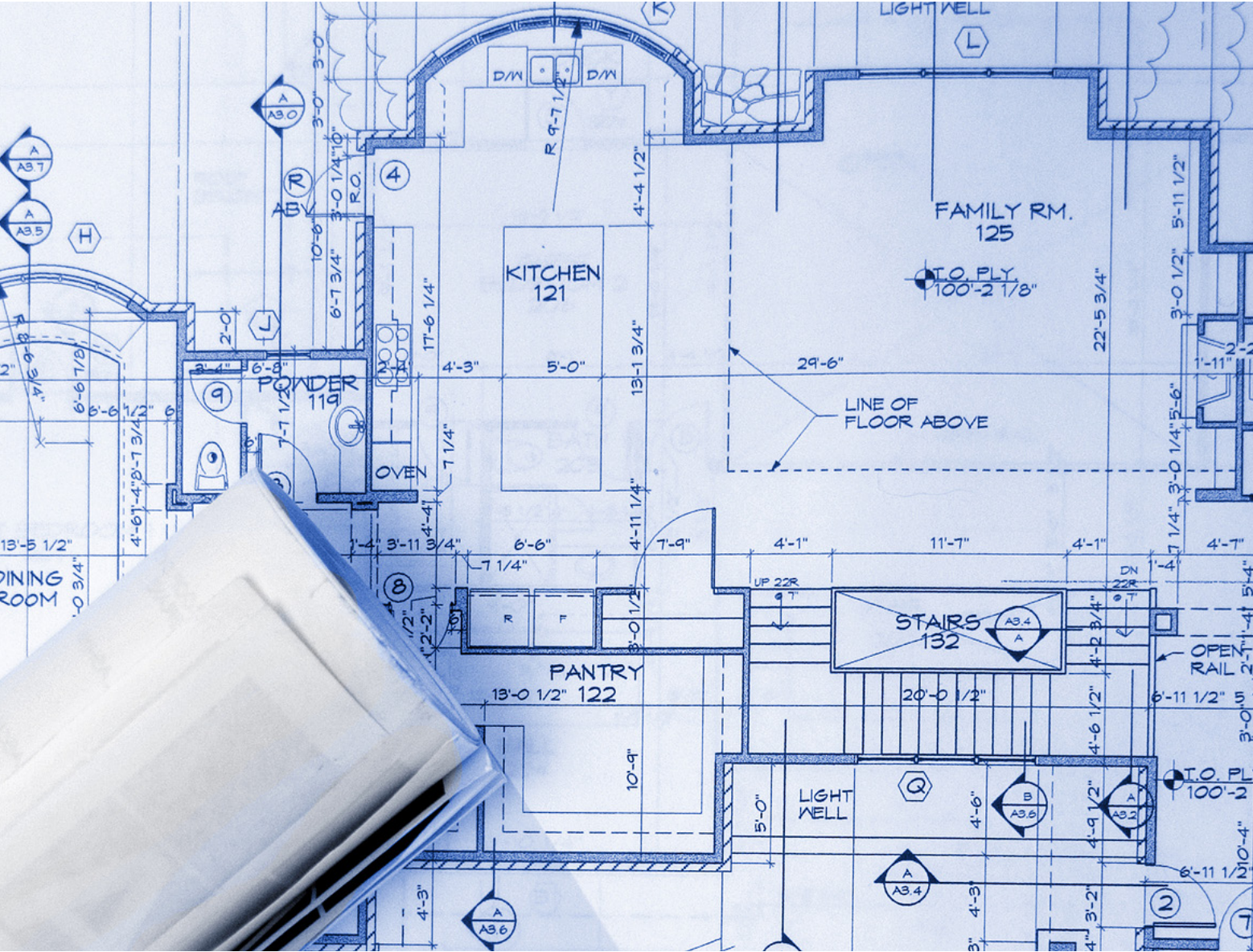


ACC SALES AND CONSULTING GROUP INC.

BUILDING MATERIALS



FULL CATALOGUE

DIGITAL PUBLICATION DATE: MARCH 2022

TABLE OF CONTENTS

U.S. BASED LINES



PG 4 - 9

TYPAR Building Wrap / 3ft. Header Wrap / TYPAR.CA House Wrap / Header Wrap / Metro Wrap / Flashing Panels / AT Flashing / Butyl Flashing / Flex Flashing / Construction Tape



PG 10 - 11

Merchandiser / Cap Hammers / Cap Staplers / Hammer Tacker / Autofeed Cap Hammers / Cap Stapler / Nail Packs



PG 12 - 18

Whirlybrids (12/14") / Lo-Omniroll (20/30') / Omniridge / Omni-wall / Ridge Vents / Louver Vents / Deck-Air / Static Roof Vents / Pan-style Vents / Adapters / Plastic Roof Louvers / Gable Louvers / Power Vents / Intake Vents / Soffit / Cirk-L Vents / Foundation Vents / Cupolas / Weathervanes



PG 19 - 21

Grace IWS / Grace IWS-HT / Select / Roof Detail Membrane / Tri-flex HT / Vycor Deck / Vycor Plus / Pro Butyl Tapes / Env-S Weather Barriers



PG 22

Homeslicker Rainscreens / Homeslicker Max Stone & Stucco



PG 23

Drywall 10mm Rainscreen with fabric



PG 24

Folding Attic Stairways

TABLE OF CONTENTS

CANADIAN BASED LINES



PG 25

Sheathing Tapes (Red / Blue) / Mini-Pallet Display



PG 25

Vapour Barriers / General Polyethylene



PG 26 - 29

Pro Systems (200/600) / Pro System 15 / Replacement Nozzles / Quick Cure Foam / Pro Gun Foams / Foam Dispenser / Home Seal / Max Fill / No Warp / Firebreak / Landscape / Mouse Shield



PG 30 - 33

Dock Floats / Shoulder Dock Floats / Bumper Floats / Wheel Floats / Poly Step Ladders / Dock Steps / Kayak & Paddle Board Rack / Bumper Boat Dock Bumper / Hardware



PG 34 - 39

Eaveguard / Blueskin RF200 / Blueskin Roof High Temp / Low Slope 1 & 2 Ply / Blueskin WP200 / Blueskin VP100 (Residential/Commercial) / Aquatac Primer / Foundation Coating / Sealants / Stop Leak / White Roof Coating / Aqua-Bloc / LF Liquid / Blueskin WB / Butyl Flashing



PG 40

Baffle Vents



PG 40

Attic Hatch



PG 41

Weathershield Insulation



PG 41

Insulation Blowing Machines



U.S. based lines invoiced in Canadian Dollars.

THE TYPAR® WEATHER PROTECTION SYSTEM.

TYPAR® BUILDING WRAPS
Stop air and control moisture.

TYPAR® FLASHINGS
Block water around doors and windows.

TYPAR® CONSTRUCTION TAPE
Bonds powerfully and seals seams.



SCORCHING RAYS

Beaten back by powerful UV protection.



HOWLING WINDS

Prove how strong our hold is.



DRIVING RAIN

Can't get in to do its dirty work.



BITTER COLD

Won't compromise your weather defense.

INSTALL THE SYSTEM. GET A LIFETIME LIMITED WARRANTY.*

Take your stand on unbeatable and comprehensive defense. Our Building Wraps, Flashings, and Construction Tape create the complete TYPAR® Weather Protection System.

Install it all together and get covered by the only lifetime limited warranty in the industry.*

**Certain limitations and exclusions apply.*

See the TYPAR Weather Protection System Limited Warranty located Online at TYPAR.com/downloads for full details.



TYPAR BUILDING WRAP



SKU#	SIZE	SKID	T.L. QTY
TYPAR3	9' x 100'	40	1,600
TYPAR3-PL	9' x 100' Labelled	40	1,600
TYPAR3-96X95	9'6" x 95'	40	1,600
TYPAR3-10X100	10' x 100'	40	1,600
TYPAR3-10X100-PL	10' x 100' Labelled	40	1,600
TYPAR3-150	9' x 150'	36	
TYPAR3-150-PL	9' x 150' Labelled	36	

■ **Extraordinary tear strength.**
5x better than the competition.

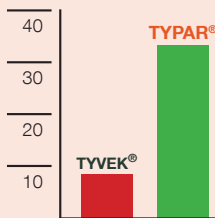
■ **Exceptional holdout.**
Blocks air and water from getting in.

■ **Optimal breathability.**
Lets moisture inside the wall cavity escape.

■ **Excellent surfactant resistance.**
Reduces damage from oils, tannins and soaps.

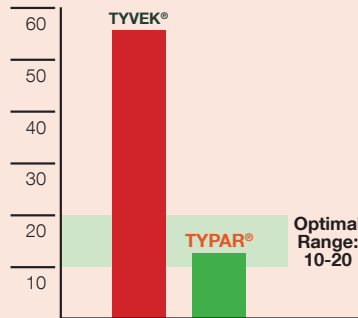
■ **Superior UV stability.**
No degradation from sunlight for up to six months of exposure.

■ **Incredible versatility.**
Able to be used under most types of cladding.



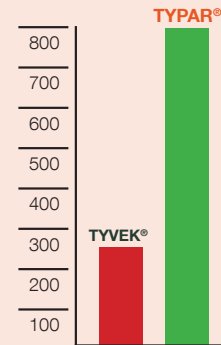
TEAR STRENGTH
measured in lbs.

Based on published results according to ASTM D-5733-99 testing.



MOISTURE VAPOR TRANSMISSION
measured in perms

Based on published results according to ASTM E-96-95. Procedure A testing.

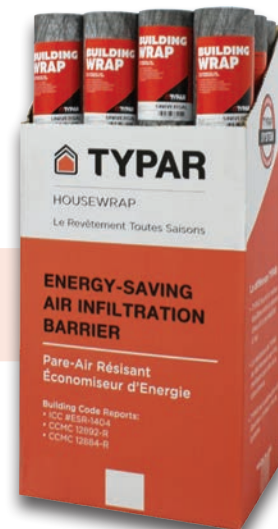


WATER HOLDOUT
measured in cm

Based on published results according to ASTM D-5733 testing.

TYPAR HEADERWRAP (3ft. Rolls)

SKU#	SIZE	CASE	SKID	T.L. QTY
TYPAR3-36	3' x 100'	12	144	3,456





TYPAR.CA HOUSE WRAP

READY FOR ANYTHING THE CANADIAN CLIMATE THROWS ITS WAY.

TYPAR.CA is specially manufactured to handle the challenges of the Canadian weather no matter what the conditions—and to outperform the competition in tear strength, breathability, and beyond.

TYPAR.CA HOUSEWRAP

SKU#	SIZE	SKID	T.L. QTY
TYPAR-CA	9' x 100'	40	1,600
TYPAR-CA-PL	9' x 100' Labelled	40	1,600
TYPAR-CA-10X95	10' x 95'	40	
TYPAR-CA-10X95-PL	10' x 95' Labelled	40	
TYPAR-CA-10X100	10' x 100'	40	1,600
TYPAR-CA-10X100-PL	10' x 100' Labelled	40	1,600

TYPAR.CA HEADERWRAP (3ft. Rolls)

SKU#	SIZE	CASE	SKID	T.L. QTY
TYPAR-CA-36	3' x 100'	12	144	3,456

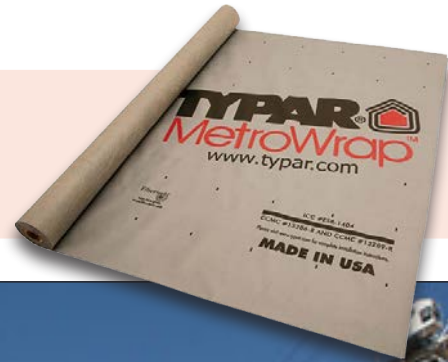
x3 TEAR
STRENGTH

50% U.V.
LONGER RESISTANCE

x3 BETTER
MVT AT 18 PERMS
(Optimal Range:10-20)

TYPAR METROWRAP

An uncompromising weather barrier with commercial grade muscle.



SKU#	SIZE	SKID
TYPAR-METRO-10X100	10' x 100'	40
* TYPAR-METRO-5X150	5' x 150'	32

*Indicates Special Order



- **Extraordinary tear strength.**

Up to 5x greater than leading polymeric wraps and up to 20x more than build paper.

- **Superior UV stability.**

Up to 12 months of UV protection.

- **Safeguards healthy spaces.**

Prevents mold growth and protects indoor air quality.

Engineered specifically for buildings over four stories, TYPAR MetroWrap provides extraordinary tear strength to hold tighter where the elements hit harder. It handles harsh chemicals and jobsite cleaning. And with unbeatable UV resistance, it can even help take the pressures off of construction delays and changing timelines.

TYPAR FLASHING PANELS

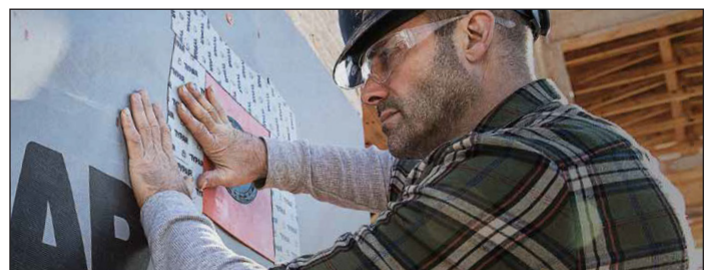
Shutting down intrusion without slowing you up.

SKU#	SIZE/USE	CASE	SKID
* TYPAR-PANEL-001	1/8" TO 3/8" PIPE	24	2304
* TYPAR-PANEL-002	1/2" TO 3/4" COPPER, RIDGED, PVC PIPE	24	2304
* TYPAR-PANEL-003	1" TO 1-1/4" COPPER, RIDGED, PVC PIPE	24	2304
* TYPAR-PANEL-004	1-1/2" TO 1-3/4" COPPER, RIDGED, PVC, ABS PIPE	24	2304
* TYPAR-PANEL-005	2" TO 2-1/2" COPPER, RIDGED, PVC, ABS PIPE	24	2304
* TYPAR-PANEL-006	3" ABS PIPE FLASHING PANEL	24	2304
* TYPAR-PANEL-007	4" ABS PIPE FLASHING PANEL	24	1944
* TYPAR-PANEL-008	6" SHEET METAL DUCT	24	1944
* TYPAR-PANEL-009	A/C LINE SET FLASHING PANEL-CURVED	4	144



*Indicates Special Order

- **Electrical, plumbing and A/C panels available.**
- **Self-seals around fasteners.**
- **Options to fit various pipe types and sizes.**
- **Install electrical and plumbing panel before or after building wrap.**
- **Paintable A/C panels blend with home exterior.**



TYPAR AT FLASHING

Apply some serious sticking power and tackle the extreme conditions.

SKU#	SIZE	CASE	SKID
TYPAR-FLAT-001	4" x 75'	12	576
TYPAR-FLAT-002	6" x 75'	8	384
TYPAR-FLAT-003	9" x 75'	4	192
TYPAR-FLAT-004	12" x 75'	4	192



- **Suitable for installation down to 0°F.**
- **Capable of adhering to wet surfaces.**
- **No primer required.**
- **2-year shelf life.**

Bitter cold. Searing heat. They won't compromise your ability to get the strongest seal possible. TYPAR All-Temperature Flashing is engineered to perform in a broad range of extremes and protect against moisture penetration at windows, doors and thru-wall entry points.

TYPAR BUTYL FLASHING

Easy to handle every day with durability for the long haul.

SKU#	SIZE	CASE	SKID
TYPAR-BUTYL-001	4" x 75'	12	324
TYPAR-BUTYL-002	6" x 75'	8	216
TYPAR-BUTYL-003	9" x 75'	4	108
TYPAR-BUTYL-004	12" x 75'	4	108



- **Contains no VOCs and won't off-gas.**
- **Won't interact with most caulks and sealants.**
- **Split poly backing for easy installation.**
- **Suitable for installation down to 30° F (-1° C).**
- **Thermally stable up to 180° F (82° C).**
- **Remains pliable for a more durable seal.**

Compared to rubberized asphalt-based flashings, TYPAR Butyl Flashing simply brings more to the job. It's pliable in cold weather. It's stable at high temperatures. Plus it maintains a flexible, but tight seal for far greater durability and long-lasting performance.



TYPAR FLEXIBLE FLASHING

Conforming to the job without compromising on the performance.



SKU#	SIZE	CASE	SKID
TYPAR-FLEXS-001	6" x 75'	3	72
TYPAR-FLEXS-002	9" x 75'	2	48

- **Extremely rugged, yet easily conformable.**
- **Improves air and moisture holdout.**
- **Self-seals around nail penetrations.**
- **Ensures tight seal around curved windows, window flanges, sill plates, corners, and joists.**

Rounded windows can be a challenge. But as far as we're concerned, the problem of getting a complete and efficient seal is solved. TYPAR Flexible Flashing is a two-ply oriented, high density polyethylene film mated to a premium rubber adhesive and release sheet.



TYPAR CONSTRUCTION TAPE

Sealing off seams and edges with superior strength and ease.



SKU#	SIZE	CASE	SKID
TYPAR-TAPE-005	1-7/8" X 165'	24	1152
TYPAR-TAPE-007	3" X 165'	16	768

- **Engineered for commercial and residential applications.**
- **Apply to window flanges, corners, joints, and seams.**
- **Seals against air and moisture infiltration.**
- **UV- and weather-resistant.**
- **Easy-tear edge for fast application.**
- **Excellent tensile strength.**
- **Performs in cold weather; apply down to 0° F (-18° C).**

TYPAR Construction Tape does a critical job in maintaining the highest levels of integrity for the building envelope. It tears quickly, and its pressure-sensitive adhesive sticks aggressively, even if you're working under low-temperature conditions.





U.S. based lines invoiced in Canadian Dollars.

STINGER CAP SYSTEMS

JUST CAP IT!



MARKET PROVEN.

STINGER brings a full program that offers many options for getting the job done. We built the cap category through consistent, reliable performance and durability.

That's why STINGER is a brand trusted by contractors.

STINGER AISLE MERCHANDISER

SKU#	SIZE
ST-MERCH-D	2'W x 2'D x 4'H

- Holds up to 12 tools and 12 boxes of fasteners.
- Dimensions: 2'W x 2'D x 4'H.
- Price includes 6 CH38, 6 CH38A & 12 boxes of staple packs .



STINGER CH38 CAP HAMMER (TRIGGER)

SKU#	DESCRIPTION	CASE	SKID	COUNT
ST-136400	CH38 CAP HAMMER	6	24	
ST-136420G	3/8" STINGER STAPLEPAC	6	24	2016/CARTON

- First hammer to deliver a cap & staple.
- Only weighs 2.6lbs.
- Fastener capacity of 168 caps and staples.



STINGER HT38 HAMMER TACKER

SKU#	DESCRIPTION	CASE	SKID	COUNT
ST-136450	HT38 HAMMER TACKER	10	24	
ST-940042	3/8" STINGER STAPLEPAC		60	5000/CARTON



- Light and easy to maneuver, but constructed with heavy-duty steel for durability.
- Features a quick-load magazine that holds 168 staples.

STINGER CH38A AUTO-FEED CAP HAMMER

SKU#	DESCRIPTION	CASE	SKID	COUNT
ST-136401	CH38A AUTO CAP HAMMER	6	24	
ST-136420G	3/8" STINGER STAPLEPAC	6	24	2016/CARTON



- Automatic hammer delivers a cap & staple at a fraction of the cost.
- Only weighs 2.9lbs.
- Fastener capacity of 168 caps and staples.

STINGER CN100 CAP STAPLER (PNEUMATIC)

SKU#	DESCRIPTION	CASE	SKID	COUNT
ST-136250	CN 100 CAP STAPLER (PNEUMATIC)	6	24	
ST-136260G	1" STINGER NAILPAC	4	24	2000/BOX



- 5 Cap staples per second.
- Only weighs 4.9lbs.
- Fastener Type: 1" EG ring shank nail.

STINGER CS150 CAP STAPLER (PNEUMATIC)

SKU#	DESCRIPTION	CASE	SKID	COUNT
* ST-136011	CS150 CAP STAPLER	50		
ST-136094G	1-1/2" STINGER STAPLEPAC	24	2000/BOX	2000/BOX
ST-136044G	7/8" STINGER STAPLEPAC	24	2000/BOX	
* ST-136074G	1-1/4" STINGER STAPLEPAC	24	2000/BOX	

*Indicates Special Order



- 5 Cap staples per second.
- Only weighs 4.2lbs.
- Fastener Type: 7/16" Crown Staples/18 gauge.

5/8" STINGER STAPLE PACK

SKU#	DESCRIPTION	CASE	SKID	COUNT
* ST-136360G	5/8" STINGER STAPLEPAC	6	24	2000/BOX

*Indicates Special Order



LOMANCO VENTILATION PROPER VENTILATION CONSERVES ENERGY.

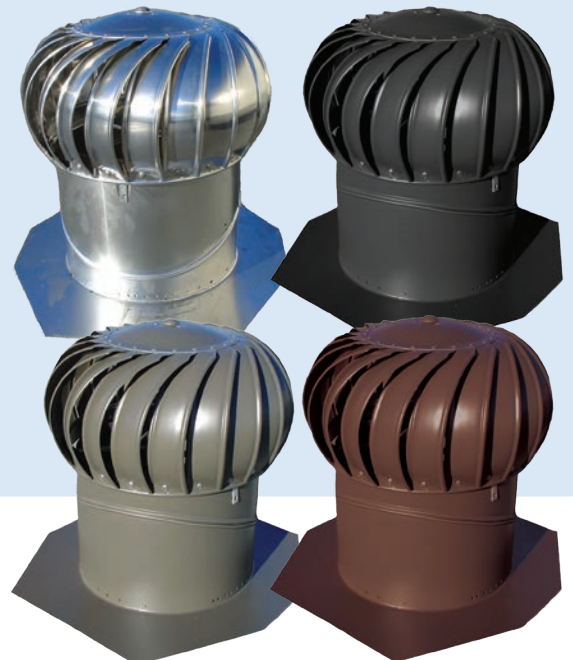


“The Lomanco Balance” offers free movement of air and weather protection . Proper ventilation reduces energy bills, winter ice build up and eliminates mold/mildew which can lead to major health problems.

By ventilating, you are extending the life of other building components (shingles , insulation, etc).

WHIRLYBIRD (Assorted Colours 12"/14")

SKU#	DESCRIPTION	SKID	T.L QTY
12" WHIRLYS			
BIB12-MI	12" Whirlybird Mill	20	
BIB12-BL	12" Whirlybird Black	20	
BIB12-BR	12" Whirlybird Brown	20	
BIB12-WG	12" Whirlybird Weathered Bronze	20	
GT12-MI	12" Galvanized Steel Turbine, Mill	20	
14" WHIRLYS			
BIB14-MI	14" Whirlybird Mill	16	416
BIB14-BL	14" Whirlybird Black	16	416
BIB14-BR	14" Whirlybird Brown	16	416
BIB14-WG	14" Whirlybird Weathered Bronze	16	416



- Only the Whirlybird turns in breezes less then 3 km/h.
- Exclusive vari-pitch base adjusts to 12/12 roof pitch.
- Unconditionally guaranteed to keep turning forever without squeaking.

LO-OMNIROLL (30'/20')

SKU#	SKID	LENGTH	T.L QTY
LOR-30	24	30'	720
OMINROLL (20') *Nails not incl.			
OR-20	24	20'	



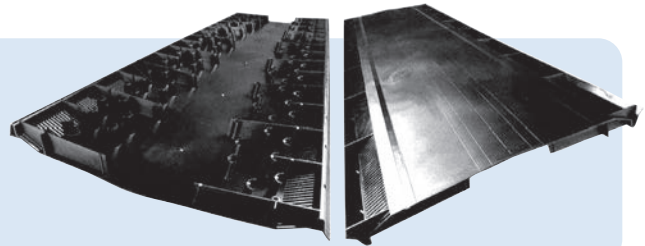
- Superior weather protection and performance with no filter to clog.
- Compact rolls are easy handle.
- Nail holes marked every 6" -will not crush down / Gunnable Nails included (*LOR-30 only)

The Rollable, Gunnable and Functional Ridge Vent.
Use with Lomanco intake vents for a complete
ROOF VENTILATION SYSTEM!



LO-OMNIRIDGE / OMNIRIDGE PRO

SKU#	SKID	LENGTH
LOR9-4	10	4'
OMINRIDGE PRO		
OR-PRO4SWN	10 (case)	4'
FULL CASE QUANTITY ONLY		



- Internal aerodynamic curved baffles.
- Weatherproof underlapping joint.
- Sonic welded fiberglass screen for enhanced weather protection (PRO).
- "Posi-tabs" contour to shingles for improved protection (PRO).

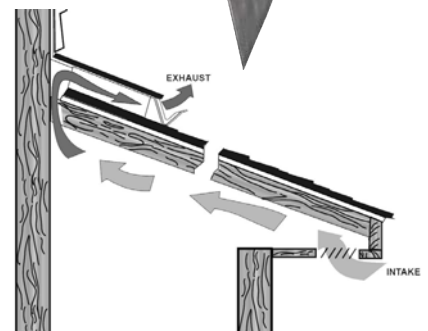
OMNI-WALL

SKU#	SKID	LENGTH
OW-4	10	4'
FULL CASE QUANTITY ONLY		



- Internal Curved Baffles.
- Weatherproof Under lapping.
- Use with Lomanco intake vents for a complete Ventilation System Solution.
- Functional ventilation for where your roof joins the wall.

The OW-4 is designed to fit any roof pitch from a 2/12 to a 16/12. Installation is made easy with supported nail holes, molded nail lines, alignment tabs, slot width guide lines, and molded-in end plugs.



VUR10 VALUE RIDGE VENTS

SKU#	COLOUR	CASE	SKID
VUR10-MI	Mill	10	138
VUR10-BL	Black	10	138
VUR10-BR	Brown	10	138
VUR-PLUG	Black	24	138

FULL CASE QUANTITY ONLY



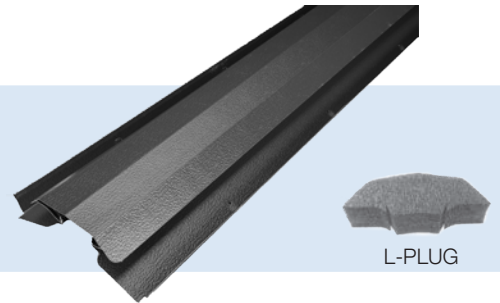
VUR-PLUG

- **Nailing flange with pre-notched nail holes.**
- **Adjusts from 3/12 to 8/12 pitches.**
- **Full 18 Sq. In. of Net Free Area per Linear Foot.**

LPR8 RIDGE VENTS

SKU#	COLOUR	CASE
LPR8	Black/Brown/Mill	10
L-PLUG	Black	24

FULL CASE QUANTITY ONLY



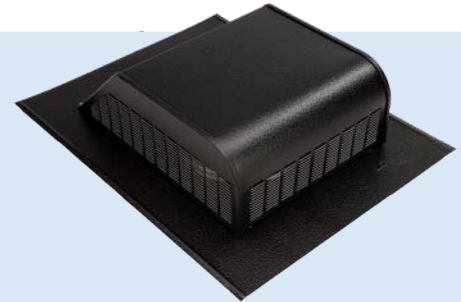
L-PLUG

- **Pre-punched nail holes.**
- **Full 18 sq.in. of net free area per linear foot.**
- **Adjustable from 3/12 top 12/12 roof pitches.**

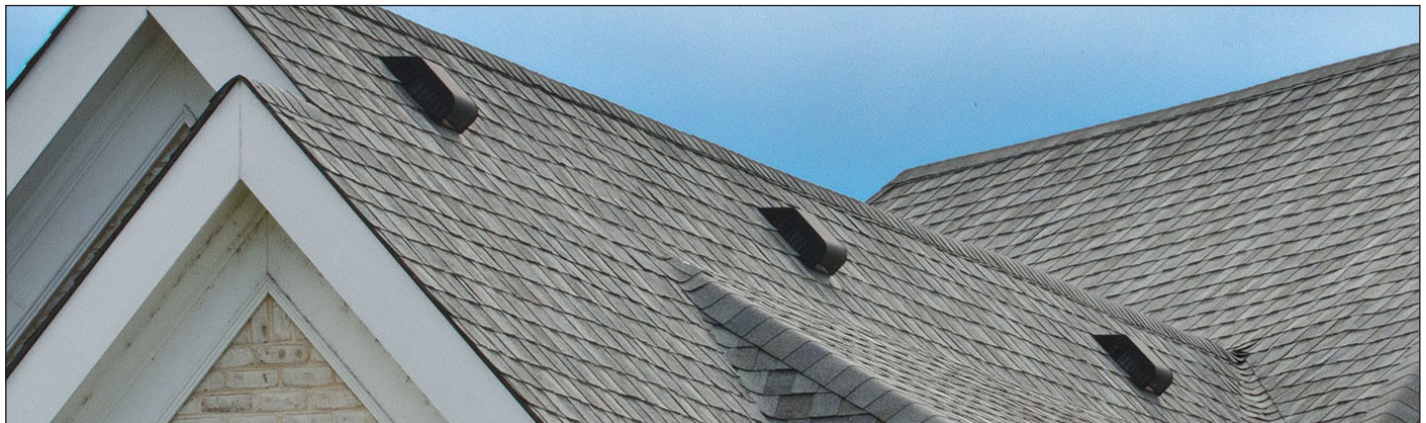
ROOF LOUVER VENTS

SKU#	COLOUR	CASE	SKID	T.L QTY
750-MI	Mill	6	168	4,368
750-BL	Black	6	168	4,368
750-BR	Brown	6	168	4,368
750-WG	Bronze	6	168	4,368
750-GR	Green	6	168	4,368

FULL CASE QUANTITY ONLY



- **Bird, Rodent, and Weather-proof.**
- **High stack achieves increased ventilation.**
- **Fits all pitched roofs.**
- **Pressed all-aluminum rust-free construction.**
- **High profile for increased weather protection & circulation.**



DECK AIR INTAKE VENT

SKU#	CASE	COLOUR
DA-4	10	Black

FULL CASE QUANTITY ONLY



- Can be installed on or off roof edge.
- Perfect for homes built with little or no overhang.
- CSA approved.



A shingle over roof intake vent that installs on the roof deck!

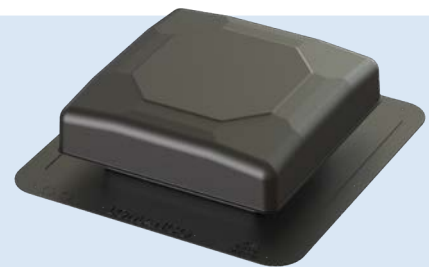
This multi-tasking vent provides continuous intake airflow and weather protection that can be installed at the roof edge or off the roof edge as required by your ventilation and construction needs.

The Deck-Air®, when properly installed with proper exhaust vents, provides a balanced ventilation system to rid your attic space of trapped heat and moisture.

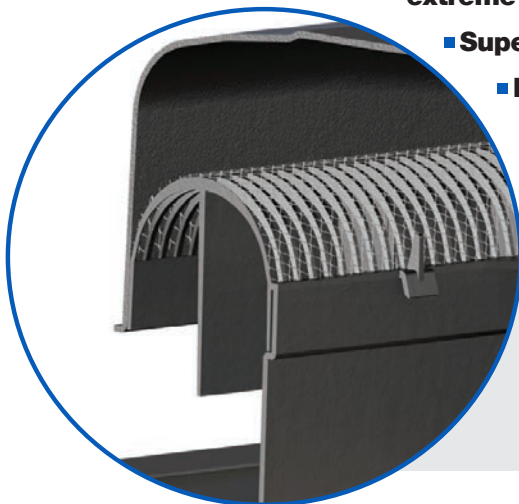
STATIC ROOF VENTS

SKU#	CASE	SKID	COLOUR
LO-P60PROW	6	252	White
LO-P60PROBR	6	252	Brown
LO-P60PROWB	6	252	Weathered Bronze
LO-P60PROGR	6	252	Grey

FULL CASE QUANTITY ONLY



- Pure impact-resistant polypropylene will not dent or crack in extreme heat or cold installations.
- Superior resistance to fading and UV degradation.
- Designed for fast installation.
- Same tried and proven polypropylene material that has been used on Omni Series Ridge Vents for over 20 years.



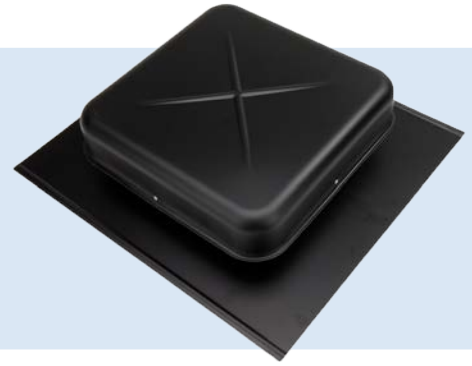
THE NEWEST ADVANCE FEATURE PLASTIC ROOF VENT

18"x16" screen provides enhanced weather protection and pest resistance.

PAN-STYLE ROOF VENTS

SKU#	CASE	SKID	COLOUR
550-MI	6	216	Mill
550-BL	6	216	Black
550-BR	6	216	Brown
* 600-BL	6		Black
* 135-MI	2		Mill

FULL CASE QUANTITY ONLY *Indicates Special Order



- 8x8 mesh screen for enhanced weather protection and pest resistance.
- Top and base available in aluminum or galvanized steel construction.
- Extra-high base flange with rounded corners.

EXHAUST VENT ADAPTER

SKU#	CASE
EVA-34	12

FULL CASE QUANTITY ONLY



LOMANCO 2000 POWER VENT

SKU#	CASE	COLOUR
* 2000HUM-BL	1	Black
* 2000HUM-BR	1	Brown
* 2000HUM-WG	1	Weathered Bronze
* 2000HUM-MI	1	Mill
2000-MOTOR		Motor Only for 2000 Power Vent
*HUMIDISTAT		Humidistat for 2000 Power Vent (CSA Approved)

FULL CASE QUANTITY ONLY *Indicates Special Order



GABLE LOUVERS (100 series)

SKU#	CASE	NET FREE AREA	COLOUR
8 x 8-100S-MI	6	22 sq ft	Mill
8 x 8-100S-WH	6	22 sq ft	White
8 x 12-100S-MI	6	36 sq ft	Mill
8 x 12-100S-WH	6	36 sq ft	White
8 x 16-100S-MI	6	51 sq ft	Mill
8 x 16-100S-WH	6	51 sq ft	White
12 x12-100S-MI	6	56 sq ft	Mill
12 x12-100S-BR	6	56 sq ft	Brown
12 x12-100S-WH	6	56 sq ft	White
12 x18-100S-MI	6	90 sq ft	Mill
12 x18-100S-BR	6	90 sq ft	Brown
12 x18-100S-WH	6	90 sq ft	White



- Heavy duty construction.
- Used for flush mounting.
- Built-in weather protection.

TRIANGULAR GABLE VENT (900 Series)

SKU#	DESCRIPTION	CASE	COLOUR
904-MI	Triangular Gable Vents (adjustable 34" to 41")	1	Mill
904-WH	Triangular Gable Vents (adjustable 34" to 41")	1	White
905-WH	Triangular Gable Vents (adjustable 42" to 51")	1	White



UNDER EAVE CORNICICE INTAKE VENTS

SKU#	CASE	SIZE	COLOUR
C416-BR	12	16 x 4	Brown
C416-WH	12	16 x 4	White
C416-MI	12	16 x 4	Mill
C616-BR	12	16 x 6	Brown
C616-WH	12	16 x 6	White
C616-MI	12	16 x 6	Mill
C816-BR	12	16 x 8	Brown
C816-WH	12	16 x 8	White
C816-MI	12	16 x 8	Mill

FULL CASE QUANTITY ONLY



CONTINUOUS SOFFIT INTAKE VENTS

SKU#	CASE	SIZE	COLOUR
105-MI	36	8'	Mill
105-BL	36	8'	Black
105-BR	36	8'	Brown
105-WH	36	8'	White

FULL CASE QUANTITY ONLY

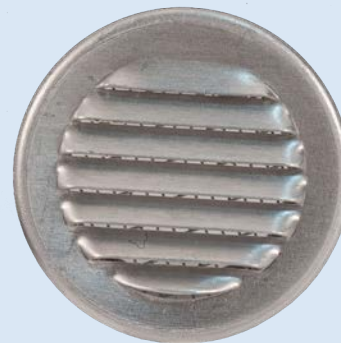


- All-aluminum rust-free construction.
- Available in 8' sections and can be cut at 2ft intervals.
- Mounting flange is recessed 3/8" for soffit board.

CIRK-L-VENTS

SKU#	CASE	DESCRIPTION	COLOUR
L38-MI	12	3" Round (pkg of 6)	Mill
CV2-MI	12	22" Round (pkg of 6)	Mill
CV3-MI	12	32" Round (pkg of 6)	Mill
CV3-WH	12	32" Round (pkg of 6)	White
CV4-MI	36	42" Round (pkg of 6)	Mill
CV4	36	42" Round (pkg of 6)	Brown/Copper/White
C816-BR	12	16 x 8	Brown
C816-WH	12	16 x 8	White
C816-MI	12	16 x 8	Mill

FULL CASE QUANTITY ONLY



FOUNDATION VENT - MODEL 189

SKU#	CASE	SIZE
189-MI	12	16x8

FULL CASE QUANTITY ONLY



FOUNDATION VENT - MODEL 199

SKU#	CASE	SIZE	COLOUR
199-BL	12	16x8	Black
199-BR	12	16x8	Brown
199-GR	12	16x8	Grey

FULL CASE QUANTITY ONLY



FOUNDATION VENT - MODEL 142

SKU#	CASE	SIZE
142-MI	12	16x8

FULL CASE QUANTITY ONLY



CUPOLA

SKU#	CASE
DRB24	1

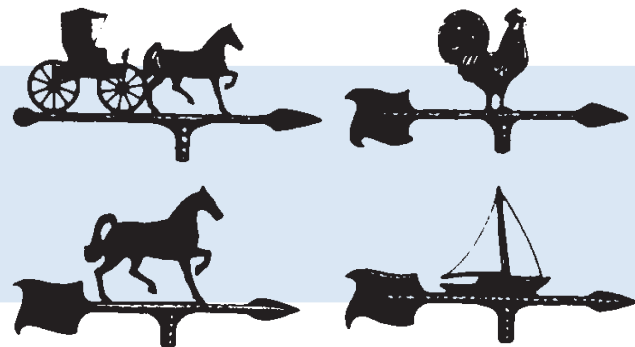
- **Elegant beneficial answer to ventilation needs.**
- **Vari-pitch base adjusts from 2/12 to 6/12 roof pitches.**
- **All-aluminum rust-free construction.**
- **Includes 8x8 perma-coated screen and built-in rain shield.**



24" x 24" x 24"
Weather vane accessory not included

WEATHERVANES

SKU#	DESCRIPTION
WV73DA	Country Doctor
WV76RA	Rooster
WV74HA	Horse
WV77SA	Ship





gcp applied technologies

GRACE CONSTRUCTION & PACKAGING

U.S. based lines invoiced in Canadian Dollars.

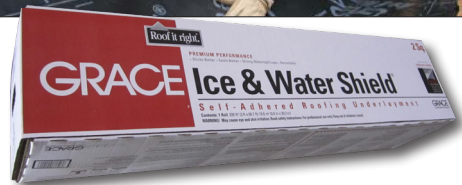
GCP APPLIED TECHNOLOGIES



WORLDWIDE LEADER
IN THE CONSTRUCTION PRODUCTS INDUSTRY

GRACE ICE & WATER SHIELD®

SKU#	SIZE	SKID	T.L QTY
WR-IWS67	3' x 67' (200ft ²)	35	770



- Best adhesion to the roof deck.
- Can be exposed up to 30 days.
- Highest quality deal around roofing fasteners.

GRACE ICE & WATER SHIELD® HT

SKU#	SIZE	SKID
WR-IWS67-HT	3' x 67' (200ft ²)	35



- Meets the challenges inherent with Metal Roofs.
- High Thermal stability and high quality seal around fasteners.
- Premium roof leak protection with 120 day exposure.

GRACE SELECT

SKU#	SIZE	SKID	T.L QTY
WR-SELECT	3' x 65'	25	550



- Easy to handle and apply 25 mil membrane.
- Half the weight of granular making installation easier.
- Re-roofable! Making re-roofing a less costly application.
- Higher adhesive content with no fillers.
- Superior foot traction without loose granules; scuff free surface.

ROOF DETAIL MEMBRANE (IWS)



SKU#	SIZE	CASE
WR-IWS-DM09-E	9" x 50'	6

- Protection for Leak-Prone Roof Detail Areas.
- Easy to Install – RIPCORD “split release on demand”.
- Highest quality seal around roofing fasteners.

TRI-FLEX XT® (Synthetic Underlayment)



SKU#	SIZE	CASE
* WR-TRIFLEX-XT	48"x250'	35
* WR-SYN15	48"x250'	48

**Indicates Special Order*

- Installs under shingles, tile, slate, metal or cedar shakes.
- 20 times stronger than felt – will not rip or tear away from nails.
- Installs quickly – one roll equals 5 rolls of felt.

VYCOR DECK PROTECTOR®



SKU#	SIZE	CASE
WR-VDP0475-E	4" x 75'	18

- Prevents moisture infiltration and deck rot.
- Suitable for use on pressure-treated and non-treated lumber.

VYCOR® PLUS RUBBERIZED ASPHALT SELF-ADHERED WINDOW & DOOR FLASHINGS



SKU#	SIZE	CASE
WR-VP1275-E	12" x 75'	6
WR-VP0975-E	9" x 75'	6
WR-VP0675-E	6" x 75'	12
WR-VP0475-E	4" x 75'	18

- Superior adhesion to substrate.
- Seals around fasteners.
- Forms superior laps.
- Ripcord® – and measurement markings.
- Highly conformable and flexible.

VYCOR® PRO-BUTYL TAPES

SELF-ADHERED WINDOW & DOOR FLASHINGS



SKU#	SIZE	CASE
* WR-V1275-PRO	12" x 75'	6
* WR-V0975-PRO	9" x 75'	6
* WR-V0675-PRO	6" x 75'	12
* WR-V0475-PRO	4" x 75'	18

*Indicates Special Order

- **Forms strong laps and bonds aggressively to the substrate, even in the cold (PRO).**
- **Prevents water penetration to the substrate (PRO).**
- **Highly conformable thin membrane, easy to work into tight details with minimal build up (PRO).**



ENV-S WEATHER RESISTIVE BARRIERS

SKU#	SIZE	CASE
* WR-112127	4" x 120'	10
* WR-112128	6" x 120'	6
* WR-112129	9" x 120'	4
* WR-112126	12" x 120'	3
* WR-112125	40" x 50'	42 (SKID)

*Indicates Special Order



- **Easy to install with strong adhesion to wood substrates.**
- **Water and air resistive that improves energy efficiency.**
- **Vapor permeable.**



HOME SLICKER RAINSCREENS (6mm/10mm)



SKU#	SIZE	SKID
BO-HS	6mm 46.5'x39" 150 FT ² /Roll	16
BO-HS10	10mm 38.5'x39" 125 FT ² /Roll	16

- Promotes long-term service-life of paints & stains.
- Not affected by heat, cold or UV.
- Provides a continuous drainage and drying plane.

The unique, vertically-channeled, three-dimensional matrix of Slicker® Classic provides a continuous space for drainage and drying, a thermal break and pressure equalization—eliminating the threat of trapped moisture. Slicker 10 Classic is designed to meet the 10mm code requirements in Canada.



HOME SLICKER MAX (STONE & STUCCO)

SKU#	SIZE	SKID
BO-HSST	6mm w/fabric 200FT ² /roll	9

- Saves time and labor costs by eliminating the need for furring strips.
- Reduces the chances of premature cracking and deterioration of finishes.
- Prevents damage from surfactants by separating the cladding from the water resistive barrier.

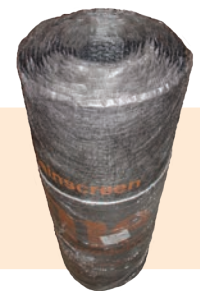
Home Slicker Max is ideal for providing drainage and ventilation behind fiber cement, stone veneer and stucco applications. Slicker 10 Max was created to comply with new Canadian building codes.



KEEN RAINSCREEN



DRYWALL 10mm RAINSCREEN W/FABRIC



SKU#	SIZE	FT ²	SKID
KE-DWRAIN10	4' x 45'	180	9
KE-WEEPSCREED	100 LN FT (20x 5' LN FT pieces)		

- **Ontario Building Code recommends the use of a 10mm rainscreen.**
- **Drainage of excess moisture, ventilation & protection from mortar in one product.**
- **Fabric stops dust and debris from getting in rainscreen.**

Keene Driwall™ Rainscreen is a drainage mat for exterior wall systems. The entangled net product eliminates incidental moisture problems in most exterior veneer applications, including stucco, manufactured stone, and plank siding.



FAKRO ATTIC STAIRWAYS



FOLDING ATTIC STAIRWAYS

SKU#	SIZE	SKID
OLN WOOD 250lbs ATTIC LADDER		
SF-66849	22.5" x 54" X (7'11" - 10'1")	12
SF-66850	25" x 54" X (7'11"-10'1")	12
LWS-P WOOD INSULATED & SEALED 300lbs ATTIC STAIRS		
SF-66803	22.5" x 54" X (7'11"-10'1")	10
SF-66804	25" x 54" X (7'11"-10'1")	10

- **Easy to install.**
- **1 year 100% warranty (OLN model).**
- **2 year 100% warranty (LWS model).**





SHEATHING TAPE (RED)



SKU#	CASE	SKID
TT-20525-6055	20	1600
TT-4205-126	(TUCK TAPE MINI PALLET 60MM X 66M) - 126 CASES	

- High shear adhesive provides aggressive contact.
- Water and moisture resistant.
- CCMC approved.

SHEATHING TAPE (BLUE)



SKU#	CASE	SKID
TT-219-08	20	1600
TT-4219-126	(SHEATHING TAPE MINI PALLET 60MM X 55M) - 126 Rolls	

- Specifically designed to seal, seam PE Vapor Barrier.
- 50% Higher adhesion level than our red Tuck Tape.
- Water and moisture resistant.

Sales Support
Tuck Tape Mini-Pallets Display
 Includes:
 126 Rolls of 66mm tape

20" x 23"



CGSB POLY VAPOUR BARRIER

SKU#	SIZE	COVERAGE	SKID
RP-5021-00	102"X177'	1500FT ²	36
RP-5031-00	120"X150'	1500FT ²	25
RP-5020-00	102"X59'	500FT ²	90
RP-5030-00	102"X100'	1000FT ²	25
RP-5040-00	240"X100'	2000FT ²	30



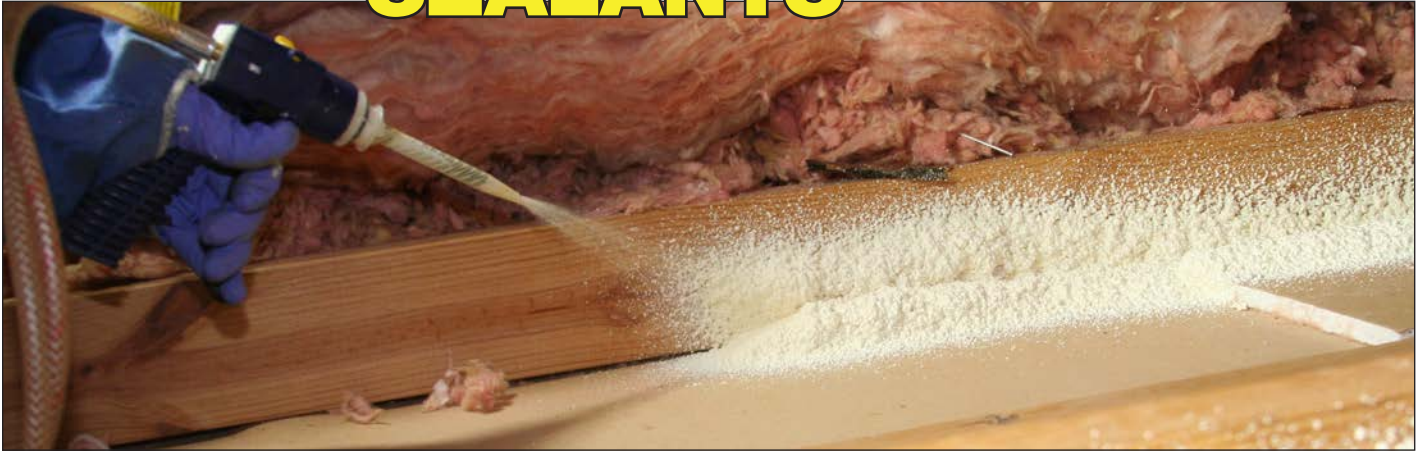
- Long lasting vapour barrier.
- Uniform 6 mil gauge.
- First Canadian manufacturer to receive CGSB status.

GENERAL POLYETHYLENE

SKU#	SIZE	COVERAGE	SKID
RP-4424-00	240"X100'	Heavy	64
RP-4216-00	120"X150'	Light	143



TOUCH N' FOAM SEALANTS



Seal gaps and cracks and insulate against the elements to make homes comfortable, quiet, cozy and more energy efficient all year round.

PRO SYSTEMS -2 COMPONENT FOAM (200 & 600) LOW GWP

SKU #	WEIGHT	COVERAGE	CASE
PRO SYSTEM 200			
TF-7565029200	29.32 lbs	200 Board feet	1
PRO SYSTEM 600			
TF-7565029600	45.04 lbs	600 Board feet	1



PRO 200



PRO 600

- High R-value =6.6 per inch.
- Anti-crossover foam applicator with 15' hoses.
- Includes chemical resistant gloves, assembly wrench, o-ring, petroleum jelly.
- Low GWP (Global Warming Potential).



Sales Support

TNFP Full Line Merchandiser

- Merchandiser Includes
- 1 case All Purpose Gun Foam
 - 1 case Window and Door Gun Foam
 - 1 case gun cleaner
 - 2 200 spray systems
 - 2 600 spray systems

24" x 24" x 48"

PRO SYSTEM 15 LOW GWP



SKU #	COVERAGE	CASE
TF-7565002515	15 Board feet	5

- **Completely self-contained 2-component foam system.**
- **Dry time 30-60 seconds (fully cured 1 hour).**
- **Pre-connected hoses for fast set-up.**
- **Low GWP (Global Warming Potential).**



REPLACEMENT NOZZLES

SKU #	TYPE	PACK QTY
TF-4004522005	Conical	5
TF-4004522025	Fan	5



QUICK CURE PRO CYLINDER -1 COMPONENT FOAM LOW GWP

SKU #	WEIGHT	COVERAGE	CASE
* TF-7565000071	10 lbs	5.2 Cubic Feet	1

**Indicates Special Order*



- **R-value = 5.4 per inch.**
- **Closed cell structure.**
- **Bonds to wood, masonry, foam board, metal, plastic, sheet rock.**

NOTICE: When using 2 component foam in conjunction with builder inspected jobs, it is the responsibility of the user to assure both the foam and process used to apply foam is in compliance with local building codes.



PRO GUN FOAMS (GUN APPLICATOR REQUIRED)

SKU #	SIZE	CASE	SKID
PRO WINDOW & DOOR FOAM			
TF-4004529700	20 oz.	12	864
ALL PURPOSE GUN FOAM			
TF-4004528730	24 oz.	12	864
FOAM & GUN CLEANER			
TF-400528700	12 oz.	12	1,296
LOW TEMP ALL PURPOSE FOAM			
TF-4006002440	12 oz.	12	
PRECISION FOAM DISPENSER			
TF-4004528775		6	



FULL CASE QUANTITY ONLY

- High R-value =4.5 per inch.
- Fills gaps, seals and insulates.
- Excellent dispensing control with applicator guns.

HOME SEAL

SKU #	SIZE	CASE	SKID
TF-4001142412	12 oz.	12	1,296

FULL CASE QUANTITY ONLY

- Ideal for smaller gaps and cracks.
- Blocks drafts, pests and insects.
- Cures fast, even in lower temperatures.



MAX FILL

SKU #	SIZE	CASE	SKID
TF-4001112012	12 oz.	12	1,296

FULL CASE QUANTITY ONLY

- **3X expansion to fill gaps greater than 1 inch wide.**
- **Weather-resistant bond seals out drafts.**
- **Blocks insects and other pests.**



NO WARP

SKU #	SIZE	CASE	SKID
TF-4001044010	12 oz.	12	1,296

FULL CASE QUANTITY ONLY

- **Low pressure formula, guaranteed not to warp frames or jambs.**
- **Fills and air seals better than fiberglass.**
- **Stops drafts to minimize energy loss.**



FIREBREAK

SKU #	SIZE	CASE	SKID
TF-4001140016	16 oz	12	1,080

FULL CASE QUANTITY ONLY

- **Meets UL 1715, UL94 V-O, modified ASTM E 814.**
- **Approved Fireblock Penetration Sealant.**
- **Fills & Seals Service Penetrations.**



LANDSCAPE

SKU #	SIZE	CASE	SKID
TF-4001140460	16 oz.	12	90

FULL CASE QUANTITY ONLY

- **Bonds with rock, stone, wood and most pond materials.**
- **Black foam blends into shadows.**
- **Won't discolor like conventional foam, no painting needed.**



MOUSE SHIELD

SKU #	SIZE	CASE	SKID
TF-4001141612	16 oz	12	N/A

FULL CASE QUANTITY ONLY

- **Contains EPA-registered pesticide that protects foam from attack by mice and other pests.**
- **Safe to use and contains no lingering odor.**
- **Air seals and insulates to save on energy costs.**



TECHSTAR DOCK FLOATS



ALL PURPOSE DOCK FLOATS

SKU#	OUTSIDE DIMENSIONS	FLOTATION	SKID
DF-AP-8	24" x 48" x 8"	250	20
DF-AP-12	24" x 48" x 12"	400	12
DF-AP-12-SS	24" x 48" x 12" (sandstone)	400	12
DF-AP-16	24" x 48" x 16"	510	10



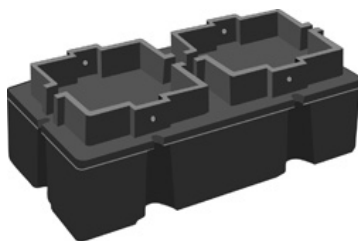
- **Versatile and economical floats.**
- **3 different heights enable unlimited configurations.**
- **EPS foam filled (expanded polystyrene).**

Each Techstar All Purpose Dock Float has 6 molded holes enabling you to lag your floats to your frame up from the bottom. You can use any size framing lumber 2x6 or larger. 3 Different heights allow you to choose your freeboard.

SHOULDER DOCK FLOATS

SKU#	OUTSIDE DIMENSIONS	FLOTATION	SKID
LOW PROFILE SHOULDER FLOAT			
DF-LP2448F	24" x 48" x 16"	425	10
HEAVY DUTY SHOULDER FLOAT			
DF-MF2448	24" x 48" x 22"	630	8

Low Profile Shoulder Float is uniquely molded with a mounting shoulder and holes to bolt through to your frame. They are ideal for all applications including commercial docks and large residential docks.



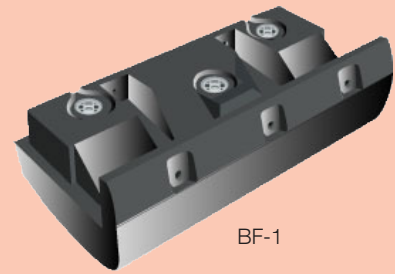
Heavy Duty Shoulder Floats are commonly used in large commercial docks. Perfect for marinas, two size floats accommodate finger docks 24", 30", 36" and 48" wide.



BUMPER FLOATS

SKU#	OUTSIDE DIMENSIONS	FLOTATION	SKID
BF-1 BUMPER FLOAT			
DF-BF-1	24" x 48" x 16"	415	12
* DF-BF-1-SS	24" x 48" x 16" (sandstone)	415	12
BF-12 BUMPER FLOAT			
DF-BF-12	48" x 24" x 21"	430	12
DF-BF-12-SS	48" x 24" x 21" (sandstone)	430	12

*Indicates Special Order



- **Foam filled with closed cell Expanded Polystyrene for added security.**
- **Designed to run the length of the dock on both sides.**
- **Deck boards sit flush with top of the float for a clean finish.**



WHEEL FLOATS

SKU#	OUTSIDE DIMENSIONS	FLOTATION	SKID
DF-WF-18	24" x 48" x 18"	575	6



- **750 Pound wheel load capacity.**
- **Heavy duty 1 7/8" aluminum axle.**
- **Wheel is built right into the float giving it 575 lb flotation.**



POLY STEP LADDERS

SKU#	DESCRIPTION
4 STEP POLY LADDER	
DF-DL-4	4 Step Vertical Ladder
DF-DL-4-GG	4 Step Vertical Ladder in Granite Grey
5 STEP POLY LADDER (Stair Style)	
DF-DL-5	5 Step Angled Ladder
DF-DL-5-GG	5 Step Angled Ladder in Granite Grey



- Slip resistant steps.
- 10-year warranty.
- Folds up when not in use.

Flip up 4 Step Dock Ladder is moulded in beautiful sandstone polyethylene. This ladder fills with water when submerged and drains when you flip it up.



5 Step Dock Stairs are ideal for an aging population and families with dogs. These stairs fill with water when submerged and drain when flipped up.



DOCK STEPS

SKU#	OUTSIDE DIMENSIONS	FLOTATION
* DF-SS-1	28"L x 20"W x 13"H	500
* DF-SS-2	36"L x 28"W x 20"H	500

**Indicates Special Order*



DF-SS-1



DF-SS-2

KAYAK/PADDLE BOARD RACK

SKU#	SIZE
* DF-R-1	2 Per Pack

**Indicates Special Order*

- 8 Bolt holes per bracket (4 horizontal, 4 vertical) for easy mounting with 5/16" hardware.
- Paddle slots moulded in.
- 2 Tie down loops per bracket.

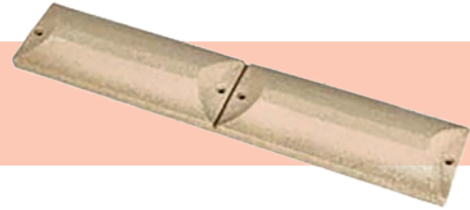




BUMPER BOY DOCK BUMPER

SKU#	SIZE	SKID
* DF-BB-7	47½" x 7" x 3"	12
* DF-BB-7-BLACK	47½" x 7" x 3"(black)	12
DF-BB-7-S	47½" x 7" x 3" (sandstone)	12
* DF-BB-9	47½" x 9" x 3"	6
* DF-BB-9-BLACK	47½" x 9" x 3"(black)	6
* DF-BB-9-S	47½" x 9" x 3" (sandstone)	6

*Indicates Special Order



- Works with new or existing docks.
- Molded in lengths just under 4 feet, the 7 inch height.
- A full 3" of protection between the dock and the boat.

HARDWARE

SKU#	SIZE	FRAMING SIZE
HINGE		
* DF-H5	3/16"	2X6
* DF-H7	1/4"	2X8
CORNER BRACKET		
* DF-CB5	3/16"	2X6
* DF-CB7	3/16"	2X8
BACKING PLATE		
* DF-BP5	3/16"	2X6
* DF-BP7	3/16"	2X8
DOCK ANCHOR		
DF-AF-250	24" diameter x 10" high	
DOCK ANCHOR BRACKET		
* DF-ANCB-7	1/4" Anchor Bracket	

*Indicates Special Order



BAKOR

HENRY BAKOR



AIR BARRIER, WATERPROOFING AND ROOFING.

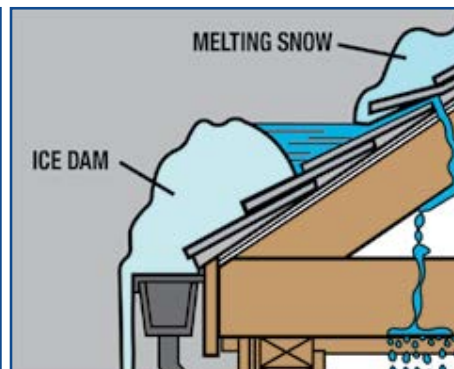
EAVEGUARD

SKU#	SIZE	SKID	T.L QTY
MB-70EG-65	3' x 65'	30	720

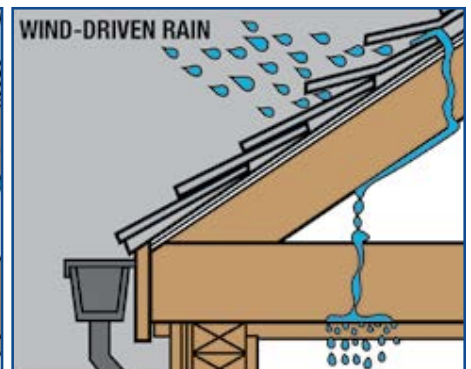
- Provides waterproof shield between the shingles and roof deck.
- Self-adhering rubberized sheet protects where shingles don't.
- Use to protect skylights, vent stacks, valleys, eaves, ridges, hips, low lope and dormer areas.



Sloped roofs are designed to shed water. Underlayments provide secondary water protection. They act as a vapour barrier in cold climates and provide protection for wind-driven rain and ice-damming at the gutter-eave interface.



Ice Dam



Driving Rain

BLUESKIN ROOF RF200A

SKU#	SIZE	SKID	T.L QTY
MB-70BS-RF200A	3' x 65'	30	720



- Easier to work with.
- Self-sealing around nails.
- Split release backing.

BLUESKIN ROOF HIGH TEMP PE200HT

SKU#	SIZE	SKID
MB-HE200HT916	36" X 65'	30



- Full coverage waterproofing layer in metal roof assemblies.
- Tough "heel puncture" resistant film for use on fluted steel decking.
- Eliminates concern for damage to architectural metal finish during application.

LOW SLOPE 1-PLY

SKU#	COLOUR	SIZE	SKID
MB-70L01-BL	BLACK	3' x 35.75'	20
* MB-70L01-CG	COOL GREY	3' x 35.75'	20
* MB-70L01-WW	WEATH. WOOD	3' x 35.75'	20

*Indicates Special Order



- Designed for application over oriented strand board and plywood surfaces.
- Split back release film for ease of application.
- Covers approximately 100 sq. ft.
- Polybitume required (1 tube per 2 rolls).
- 1 Ply requires Aquatac Primer.

LOW SLOPE 2-PLY

SKU#	COLOUR	SIZE	SKID
MB-70L02-BL	BLACK	3' x 35.75'	20
MB-70L02-CG	COOL GREY	3' x 35.75'	20
MB-70L02-WW	WEATH. WOOD	3' x 35.75'	20



- Nailed for extra security.
- Permanently flexible even at low temperatures.
- No primers required.
- Cold application; no possibility of fires.
- Polybitume required (1 tube per 2 rolls)

BLUESKIN® WP200



SKU#	SIZE	SKID	T.L QTY
MB-70BS-WP200	36"x67'	20	600

- **CCMC Approval.**
- **No flame required.**
- **SBS membrane flexible at low temperatures.**
- **Fully adhered systems prevent lateral water movement.**
- **Primer required, 3.78 L of Aquatic primer per 2-3 rolls.**

BLUESKIN® VP 100 (RESIDENTIAL)

SKU#	SIZE	CASE
* MB-HE100GUSA994	4"x100'	12
* MB-HE100GUSA995	6"x100'	8
* MB-HE100GUSA984	9"x100'	4
* MB-HE100GUSA987	12"x100'	4
MB-HE100GUSA940	48"x100'	28

*Indicates Special Order

- **Provides superior moisture and water protection.**
- **Eliminates drafts to improve comfort.**
- **Reduces energy costs.**
- **Improves insulation performance.**
- **Helps protect against mold.**



BLUESKIN® VP 160 (COMMERCIAL)

SKU#	SIZE	CASE
* MB-HE160GUSA974	4"x100'	12
* MB-HE160GUSA971	6"x100'	8
* MB-HE160GUSA986	9"x100'	4
* MB-HE160GUSA988	12"x100'	4
* MB-HE160GUSA941	48"x100'	28

*Indicates Special Order



- **Meets highest industry standards for commercial air barriers & assemblies.**
- **Combines benefits of water resistive barrier with commercial air barrier.**
- **Fully adhered peel n' stick to substrates, eliminating water migration.**

AQUATAC PRIMER

SKU#	SIZE	SKID
MB-AQUATAC-04	3.78 L	4/CASE
MB-AQUATAC-19	18.9 L	36

FULL CASE QUANTITY ONLY

- Environmentally friendly -Low VOC content.
- Specially designed to provide a high level of tack on vertical surfaces.
- High tac film provides positive adhesion to membrane.
- Water based, no solvent odors.



WATERPROOF FOUNDATION COATING

SKU#	SIZE	SKID
MB-700-01-19	18.93 L	36

- Odorless, non-toxic, of heavy brush consistency.
- Ideal for insulated concrete forms (ICF), preserved wood foundations (PWF), foundation walls, footings, and retaining walls.
- Excellent adhesion to both damp and dry surfaces.
- Contains no asbestos or volatile compounds.
- Environmentally friendly material.



DAMP PROOF FOUNDATION COATING

SKU#	SIZE	SKID
MB-810-07-04	3.78 L	4/case
MB-810-07-19	18.9 L	36

FULL CASE QUANTITY ONLY

- Prevents absorption and migration of dampness and moisture.
- Easy, brush on formula
- Used as a protective coating and preservative for new or old weathered asphalt, metal, or roll roofing. Used to line gutters and paint metal flashings



SEALANTS

SKU#	DESCRIPTION	SIZE	CASE
MB-570-05-10	Polybitume Sealant 570-05	10 kg	48
MB-40POLYB-850	Polybitume Sealant 570-05	850ml	12/case
MB-40POLYB	Polybitume Sealant 570-05	300ml	30/case
MB-HE925BC204	BES 925 Sealant 10.3 OZ BLK/24		24/case
MB-QDP482	QuickDry Asphalt Primer	482 g	24/case



STOP LEAK



SKU#	DESCRIPTION	SIZE	CASE
MB-HE480B077	Henry Stop Leak - Black	14.1OZ	12/case
MB-HE480W077	Henry Stop Leak - White	14.1OZ	12/case

- **100% silicone technology creates a waterproof seal.**
- **Stops leaks fast and permanently on a variety of surfaces.**
- **Rain-safe in 15 minutes.**
- **Lifetime limited warranty.**

100% SILICONE WHITE ROOF COATING



SKU#	SIZE	CASE
MB-HE487623	18.93 L	
MB-HE487660	3.78L	4

- **100% silicone technology creates a waterproof seal.**
- **Stands up to sun, rain, wind, ice and snow.**
- **Rain-safe in 15 minutes.**
- **Lifetime limited warranty.**

AQUA-BLOC® (EMULSION BASED FOR ICF)



SKU#	SIZE	SKID
MB-720-38-19	18.93 L	36

- **Can be applied to damp or green concrete.**
- **Bridges cracks up to 3mm (1/8").**
- **Also used for waterproofing cured and block foundation walls, insulated concrete forms (ICF) split slab floors, and residential retaining walls.**

AQUA-BLOC® (SOLVENT BASED)



SKU#	SIZE	SKID
* MB-770-06-19	18.93 L	36

*Indicates Special Order

- **A liquid applied, asphalt waterproofing membrane.**
- **Used for waterproofing foundation walls and other structures.**
- **Cures through solvent evaporation.**
- **Provides a “seamless” rubber-like, impervious membrane.**
- **Above, on or below grade installation for waterproofing parking decks, tunnels, planters, mechanical rooms, reflective pools and foundation walls.**

AIR-BLOC® LF LIQUID

SKU#	SIZE	CASE
MB-HE022BWB203	20oz	12



Henry® Air-Bloc® LF is a moisture cure single-component elastomeric liquid-applied flashing using a highly advanced Silyl-Terminated Polyether (STPE) polymer. It is designed to cure through reaction with airborne moisture to provide a heavy-duty, seamless, rubber-like impervious membrane with excellent weathering and water resistance.



BLUESKIN® WB

SKU#	SIZE	CASE
MB-BH200WB4559	4" x 50'	12
MB-BH200WB4578	6" x 50'	8
MB-BH200WB4590	9" x 50'	4
MB-BH200WB4335	12" X 50'	4
* MB-BH200WB4336	18" x 50'	4
MB-BH200WB4337	36" x 50'	1
BLUESKIN® SPRAY PREP PRIMER		
MB-482-425	425g	6 (SKID)

*Indicates Special Order FULL CASE QUANTITY ONLY



- Window & door flashing self-adhered.
- Impermeable to air, vapour and water.
- Fast, easy peel and stick application.

BUTYL FLASHING

SKU#	SIZE	CASE
* MB-HE205929	4" x 75'	12
* MB-HE205968	6" x 75'	8
* MB-HE205954	9" x 75'	4
* MB-HE205976	12" X 75'	4

*Indicates Special Order



- Impermeable to air, moisture vapor and water.
- Easy self-adhered application.
- Self-sealing when punctured.
- Excellent cold weather adhesion.
- Highly flexible making installation easy.

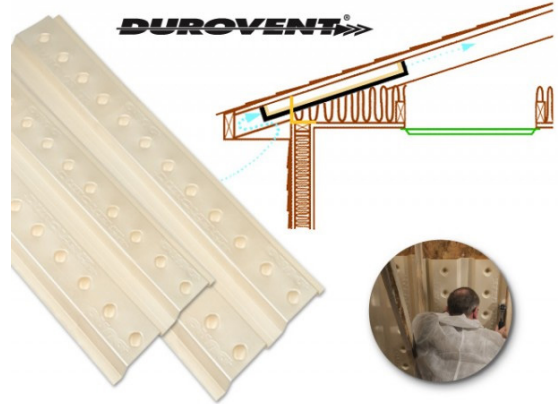


DUROVENT BAFFLE VENTS

SKU#	COLOUR	SIZE	CASE	SKID
AD-UDV2248	WHITE*	48"x 22"	70	560
FULL CASE QUANTITY ONLY				

*Colour subject to change due to use of recycled product in construction

- An economical way to meet energy code requirements for air flow.
- Multiple lengths and perforated center line to fit all applications.
- Wide nailing flange and center strut allows for easy installation.
- Net free vent: 18.7 sq in.



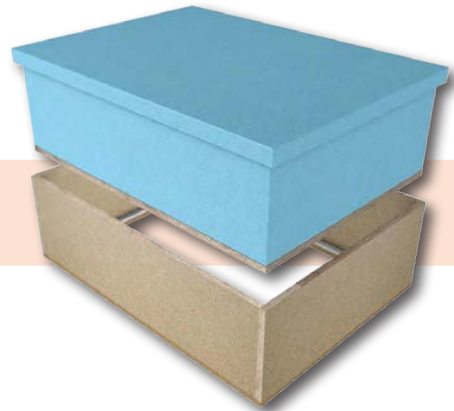
ThermoShield R50

ATTIC HATCH

R50 ATTIC HATCH

SKU#	DESCRIPTION	SKID
IN-ATTIC-R50	R-50 Attic Hatch 22x30	20

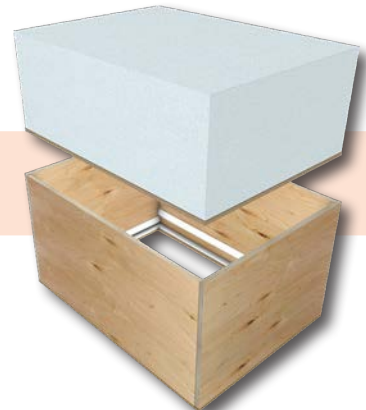
- Built with MDF and polystyrene insulation.
- R-50 Value.
- Meets National Building Code requirements.
- Stable polystyrene insulation that does not absorb water.



R50 ATTIC HATCH PLYWOOD

SKU#	DESCRIPTION	SKID
IN-ATTIC-R50-PLY	R-50 Attic Hatch 22x30 Plywood	22

- Built with Plywood and polystyrene insulation.
- R-50 Value.
- Meets National Building Code requirements.
- Stable polystyrene insulation that does not absorb water.





WEATHERSHIELD INSULATION



SKU#	COLOUR
WS-25	Skid Lots, 48 Bags / Skid
WS-25-DS	Full Truckload, min. 1,152 bags, F.O.B. Etobicoke – Actual freight rate will be quoted

- **Made from recycled materials.**
- **No known associated health risks for humans or pets.**
- **Maintains its specified R-value over a wide range of densities and temperatures.**

Number of Bags Required

Area Covered	R-10	R-12	R-20	R-28	R-30	R-32	R-34	R-40
500 sq.ft.	7	8	14	20	21	22	24	28
600 sq.ft.	8	10	17	24	25	27	29	34
700 sq.ft.	10	12	20	28	29	31	33	39
800 sq.ft.	11	13	22	31	34	36	38	45
900 sq.ft.	13	15	25	35	38	40	43	51

Number of Bags Required continued

Area Covered	R-10	R-12	R-20	R-28	R-30	R-32	R-34	R-40
1,000 sq.ft.	14	17	28	39	42	45	48	56
1,100 sq.ft.	15	19	31	43	46	49	53	62
1,200 sq.ft.	17	20	34	47	50	54	57	67
1,300 sq.ft.	18	22	36	51	55	58	62	73
1,400 sq.ft.	20	24	39	55	59	63	67	79



KRENDL INSULATION BLOWING MACHINES

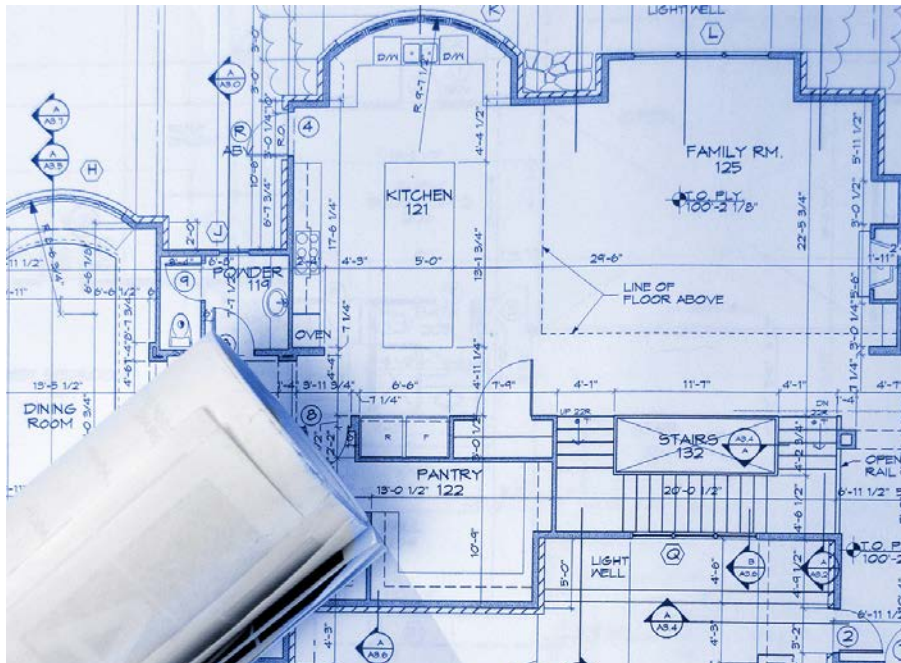
SKU#	DESCRIPTION
KRENDL325	#325 2 STG BLWR, WHEEL PKG, 100FT HOSE
KRENDL425-R	#425B 2 STG BLWR, WHEEL PKG, W/REMOTE & 100' HOSE
KRENDL475	#475 3 STG BLWR, WHEEL PKG, 100FT HOSE
KRENDLGV180	#GV180 GAS POWERED VACUUM 18HP 7,000LBS/HR

- **Dual (2) steel agitators enhance the conditioning of fibres.**
- **Nickel plated #40 chain with hardened steel sprockets provides a corrosion/abrasion resistant drive system .**
- **Improved blower filter design for less filter maintenance.**



ACC SALES AND CONSULTING GROUP INC.

BUILDING MATERIALS



FULL CATALOGUE

DIGITAL PUBLICATION DATE: MARCH 2022