

**PROUDLY MADE IN CANADA
LOCALLY SOURCED**

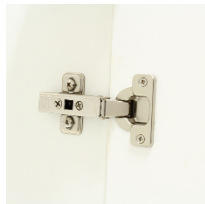
Huntsville White Shaker Vanities

QUICK SHIP Huntsville Shaker White Vanity Combos

Your Vanity and Top are built, **and ready to ship in 2 weeks or less**. Your Huntsville Shaker White Vanity Combo comes with soft close metabox drawers, soft close doors, standard toe kick, and a *White Cultured Marble Top with Contempo bowl*. Vanities are pre-drilled for hardware, brushed nickel knobs are included. Vanities and tops packaged separately. Vanities come with 6-3/16" front and full gable side.

***Special Order Vanities Available ***

Standard Hardware Features:



Soft Close Hinges



Metabox Soft Close
Drawers



Brushed Nickel Knobs



Standard Toe Kick

Choose Your Quick Ship Vanity



30" LH or RH (LH Shown)



36" LH or RH(RH Shown)



48"



60" Single Sink



60" Double Sink

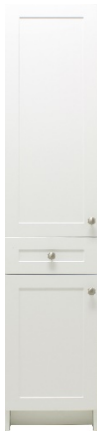


30" 2 Door



36" 2 Door

Complete Your Vanity Ensemble by adding a linen tower, or mirror, or both!



15"W x 18"D x 75"H
LH or RH Linen Tower
(LH Shown)



24"W x 30" H Mirror



White Cultured Marble – Contempo Bowl

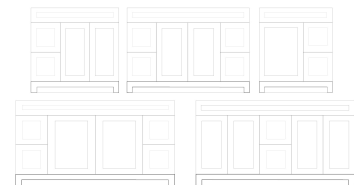
NOTE: Larger orders may result in extended lead times.

Make Your Special Order Impression Vanity in 3 Simple Steps

Step One: Choose Your Door

Step Two: Choose Your Top

Step Three: Choose Your Layout



Cabinetry Highlights

Standard Vanities are built with Maple interiors and full gables (non-notched) with a recessed toe kick.

*Vanities with white doors feature a white interior.

Although standard, each piece of hardware is built for superior function and reliability.

Those looking to add more can find beautiful upgrade options without adding any custom build times.

Interior Finishes

Impression Bath Furniture comes standard with Maple interior (maple bottoms and backs with colour matched gable interior) for all colours except White & Antique White. Antique White and White door styles get White interior (white bottom and backs with colour matched gable interior.)

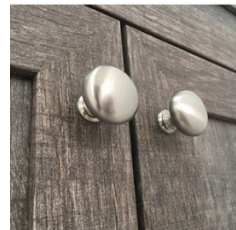
Standard Hardware Features:



Soft Close Hinges



Metabox Soft Close Drawers



Brushed Nickel Knobs

Upgrade Options:



Decorative Toe Kick



Intero Full Extension Soft Close Drawer



Dovetail Drawer

Step One: Choose Your Door from the Options Below

Shaker Styles

The latest in trending colours, textures and grains, infused into the popular shaker style. Choose from the styles below:



Banff



Canmore



Jasper



Whistler



White



Antique White



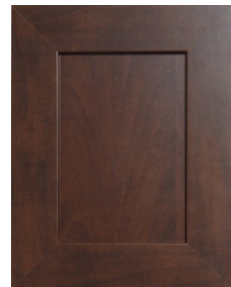
Ashen



Fossil



Zambukka



Java

Transitional Styles

If your looking for classic, timeless looks with the look and feel of real wood, Transitional doors are what your are looking for. Choose from the styles below:



Banff



Canmore



Jasper



Whisler



White



Antique White



Ashen



Fossil



Zambukka



Java

Step Two: Choose Your Top from the Options Below

Vanity Tops

The latest in popular prism quartz along with traditional granite styles in a variety of colours.

Quartz Vanity Tops – Single Hole

Our Prism Quartz Vanity Top is fabricated from tough quartz aggregate, creating a surface that is harder and more scratch resistant than granite. Quartz Backsplash and Endsplash are 4"H + 3/4" thick.

Available in 31"W, 37"W, 43"W, 49"W, 61"W single, 61"W double; all in 22" depth.



**36in Prism Quartz
Porcelain White**



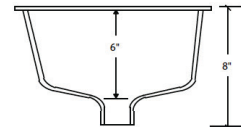
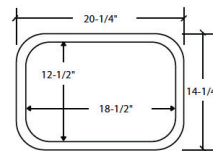
Prism Quartz Ocean Grey Prism Quartz Carrara White



Standard Undermount Bowls

2cm thick top with rectangular under mount porcelain bowl with a 4" faucet centre and eased edge.

Single and double bowls are available with standard depth of 22-1/4".



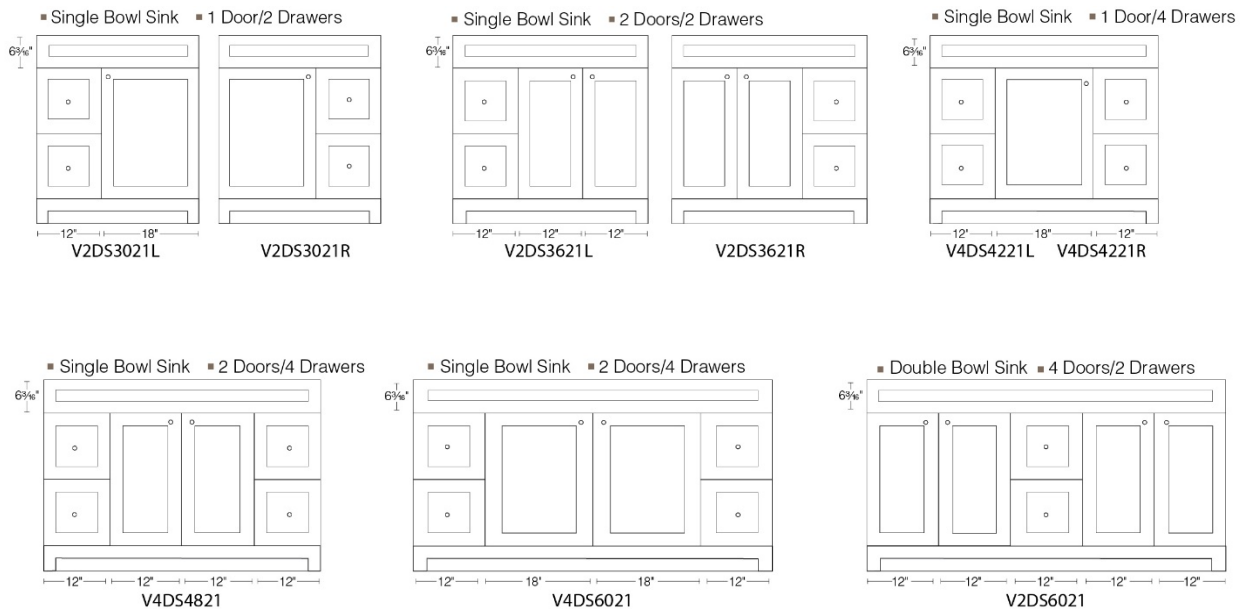
Contempo Cultured Marble Vanity Tops – 4" Centre

The CabinetSmith Contempo Vanity Top offers the stylish look you need to complete your vanity. Each top has a square bowl with built in overflow and comes pre-drilled for 4" faucets (faucets not included). Contempo vanity tops are available in Cultured White Marble. Available in 31"W, 37"W, 49"W, 61"W single, 61"W double; all in 22" depth.

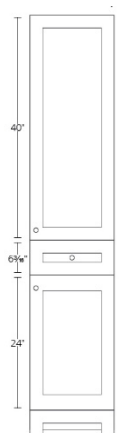


White Cultured Marble

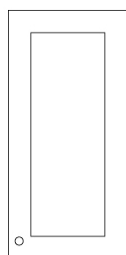
Step Three: Choose Your Vanity Layout



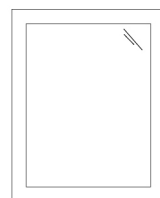
Add your linen tower, wall cabinets and mirror.



Linen Tower
15"W x 75"H x 18"D



Wall Cabinet
12"W x 25"H x 8"D



Mirror
24"W x 30"H

Simple Solution Vanity Spacer

Fill in any spaces or gaps with a vanity matching strip.



Finish with Crown Moulding and Toe Kick

